

An aerial photograph of a yellow house with a grey tiled roof and a matching garage. The house is surrounded by lush greenery, including trees and a well-manicured lawn. A river flows through the background, and a forested hill rises in the distance. The property is enclosed by a wooden fence and a hedge. The sky is blue with some light clouds.

EDEN MIDCALF
— SALES & LETTINGS —

OFFERS IN THE REGION OF

£275,000

Northwood Lane

Worcestershire, DY12 1AS

PROPERTY SUMMARY

A delightful two bedroom detached chalet bungalow enjoying a wonderful tranquil setting, with stunning views over the River Severn, and in close proximity to the Severn Valley Railway. Offering a spacious and attractively appointed layout which is "ready to move into, plus off-road parking, a double garage / large workshop and a beautifully landscaped rear garden, backing onto the river and including fishing and mooring.

2



1



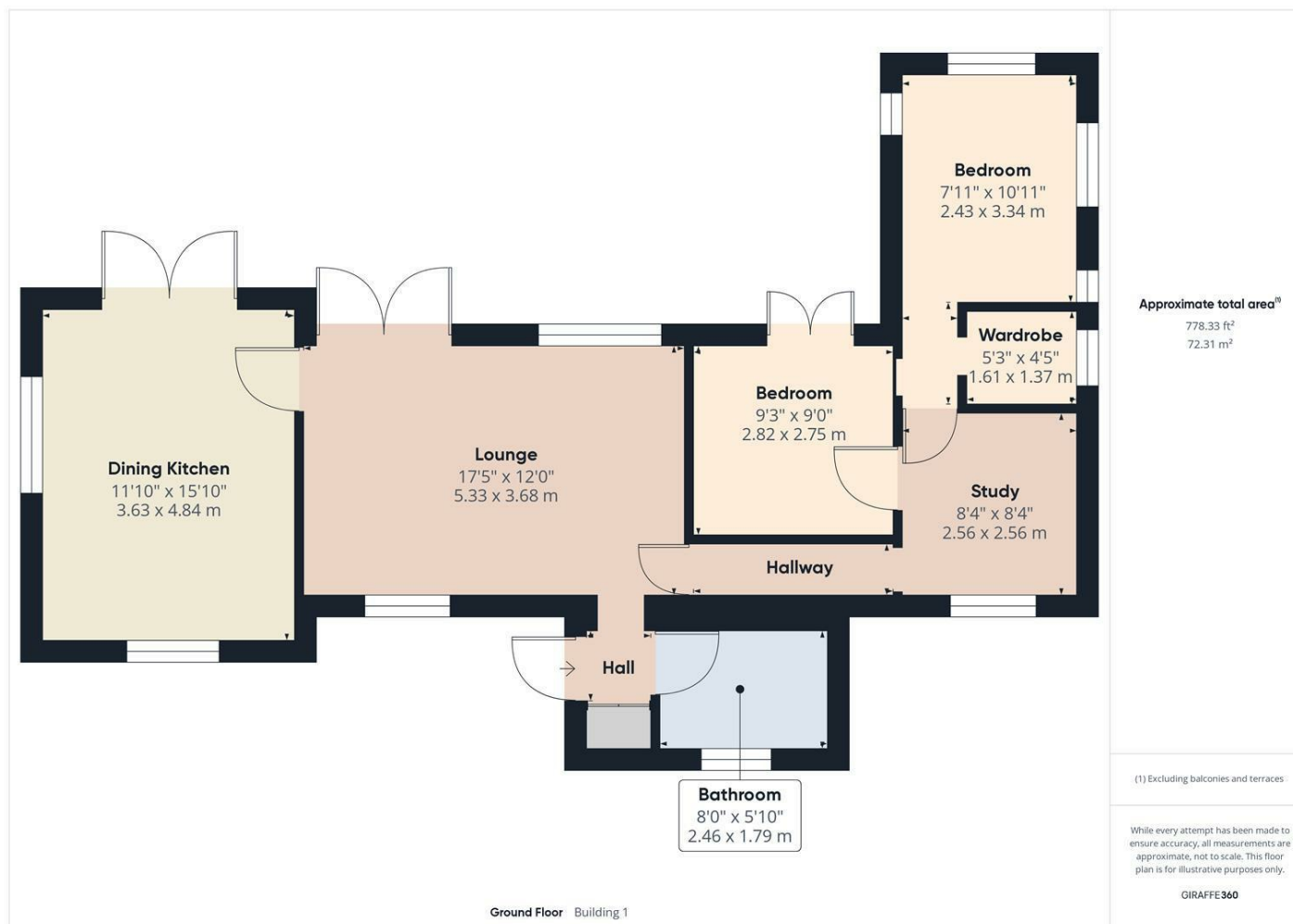
1











LOCAL AUTHORITY

TENURE

Leasehold

COUNCIL TAX BAND

A

VIEWINGS

By prior appointment only

Energy Efficiency Rating		
	Current	Potential
Very energy efficient - lower running costs		
(92 plus) A		
(81-91) B		
(69-80) C		
(55-68) D		
(39-54) E		
(21-38) F		
(1-20) G		
Not energy efficient - higher running costs		
England & Wales		EU Directive 2002/91/EC

Agents Note: Whilst every care has been taken to prepare these particulars, they are for guidance purposes only. All measurements are approximate and are for general guidance purposes only and whilst every care has been taken to ensure their accuracy, they should not be relied upon and potential buyers/tenants are advised to recheck the measurements

EDEN MIDCALF
— SALES & LETTINGS —

5 Load Street
Bewdley
DY12 2AF

01299 402392
wyreforest@edenmidcalf.co.uk
<https://www.edenmidcalf.co.uk/contact-us/>